



Date : 28/09/2018
DOC : PS P-5-4-4

Mother command board with tactile display ET35ASBP of 1 LP draught gas burners, with modulating heat input.

Family:
Flame control / draught gas burner command systems

Main applications:
For all cooking appliances equipped with draught low-pressure gas burners.

Example of 1 mother board ET35ASBP code 50004920 assembly on frontal stainless-steel



Welcome window of the command mother board ET35ASBP

The command mother board ET35ASBP with a tactile display 3.5" is adapted for the control of an atmospheric gas thermal equipment equipped with solenoid gas valve VK4105V and NRG118 fan with air-gas flow modulating technology. This command board is adapted for a draught gas burner supplied in natural gas or in butane or in propane at 65mbar max for commercial cooking or industrial applications. All the components for the gas circuit are complying to the essential requirements of the GAR 2016/426

Option Designations	Available
Gas Appliance manufacturer logo*	On condition of quantity
Delayed start on weekly clock,	✓
Temperature regulator PID with thermocouple J or K probe	✓
Raising curve temperature regulator PID further °C/time with thermocouple J or K probe	Specific application
Needle probe temperature control in thermocouple J or K probe.	✓
Timer in hour: minutes until 99h59	✓
Gas pressure switch indicator	Not used
Several phase cooking processes setting by recipes	✓
Recording of the cooking by physical measurement during the process	Not

*Selon quantité minimum de commande**

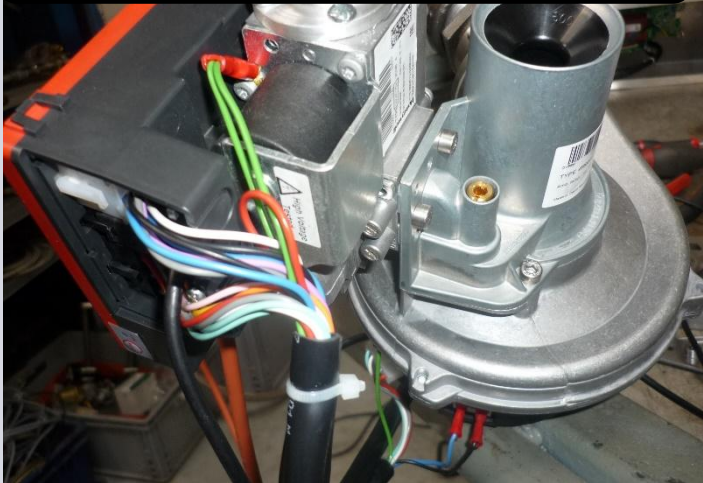
Designation of the main components	Item Code
Solenoid gas valve block VK4105V, CE approved	50 004 726
Command Mother board, with tactile screen 3.5" type <u>ET35ASBP</u> , in 230Vac	50 004 920
Flame Controller S4965V in 230Vac to connect on the valve block, EC approved	15 000 680
triple connector wire beam for controller S4965V	50 004 928
3.5" display gasket	41 808 406
Command box with 1 board ET35ASBP in 230Vac, 380 x h300 x p160mm, with wire beam,	31 821 150
Command box with 2 boards ET35ASBP in 230Vac, 380 x h300 x p160mm, with wire beams,	31 821 140



**Mother command board with tactile display
ET35ASBP of 1 LP draught gas burners, with
modulating heat input.**

Date : 28/09/2018
DOC : PS P-5-4-4

Air-gas assembly with valve block VK41,
controller S4965V and NRG118 fan with wire



Command box with 2 boards ET35ASBP for 2
individual burner controls, Item code



Tactile screen 3.5" dimensions



Heating process settings window for liquid heating mode.

Setting functioning or adjustments made in manufacture

Clock adjustment of the welcome page (local PARIS time).

Gas family adjustment: 2nd or 3rd family. (For the 1st gas family, set the 2nd gas family adjustment)

Temperature measuring probe type : J or K.

« Slider » modulation touch for the simple burner functioning. (this function doesn't allow any heating process setting)

Modes : brewery, distillery, liquid heating process (boiling pan included), oven, friers, brat pan,